

Тема 2.4. Скелет.

Skeleton.

The Skeleton is composed of bones. In the adult the skeleton has over 200 bones. It performs several functions :

- Supporting
- Protective
- Locomotor
- Formative



Skeleton

Axial skeleton

- Spine
- Skull
- Thorax

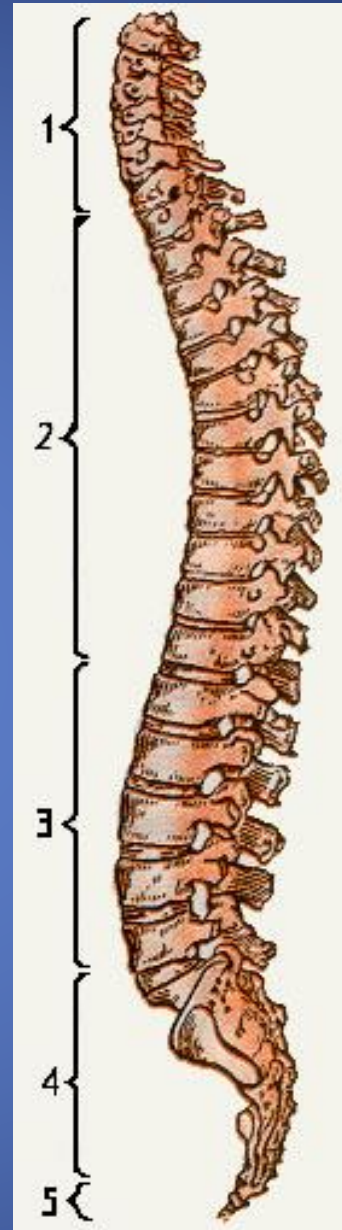
Appendicular skeleton

- Upper limbs bones
- Lower limbs bones

**The Spine is
composed of 33
seperate vertebrae:**

1. 7 cervical
vertebrae
2. 12 thoracic
vertebrae
3. 5 lumbar
vertebrae
4. 5 sacral vertebrae
5. 1-5 coccyx

(* The vertebra is a
small bone which is
formed by the body
and the arch)

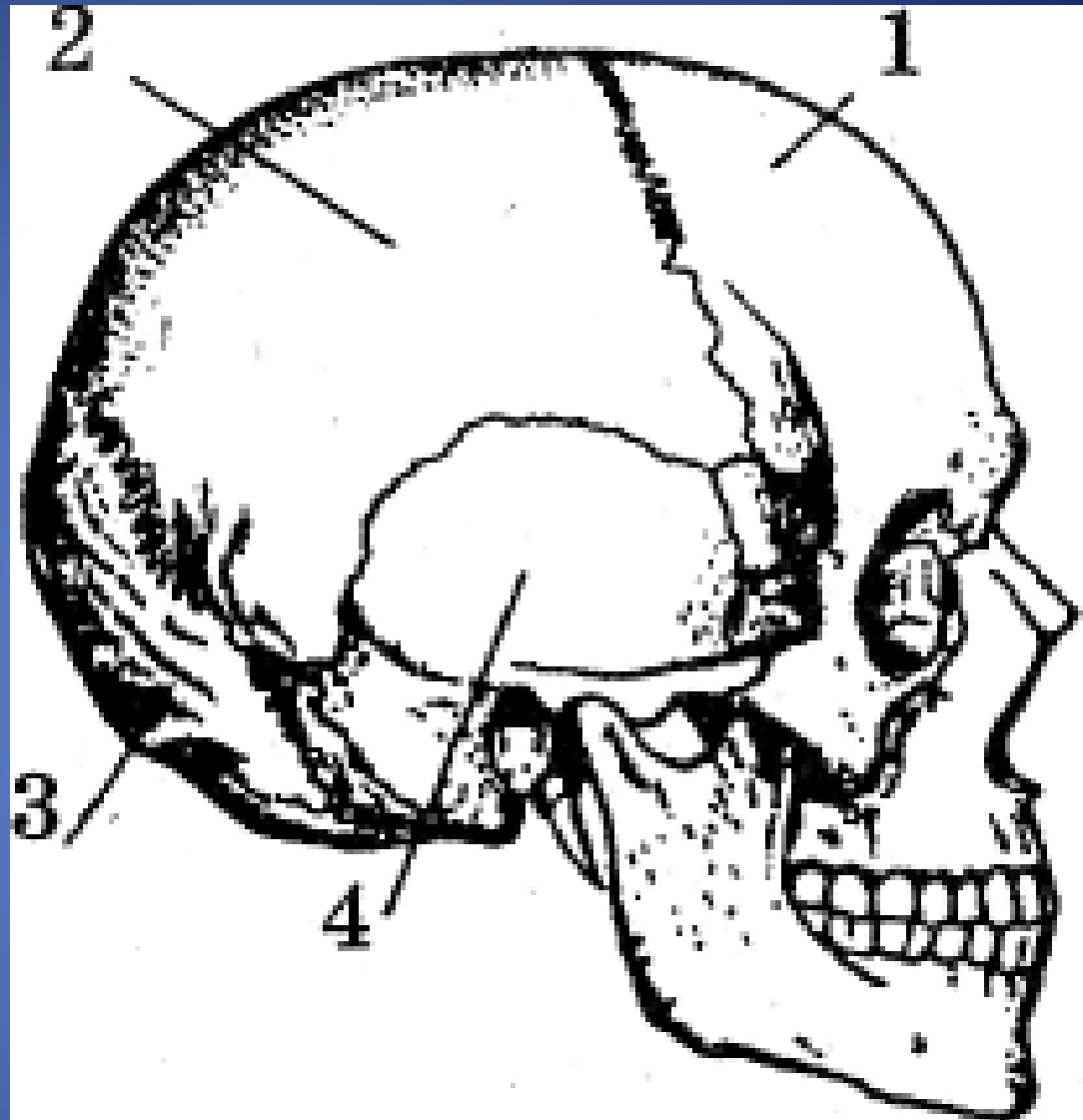


Skull has two departments:

- back skull
- facial skull

Skull bones:

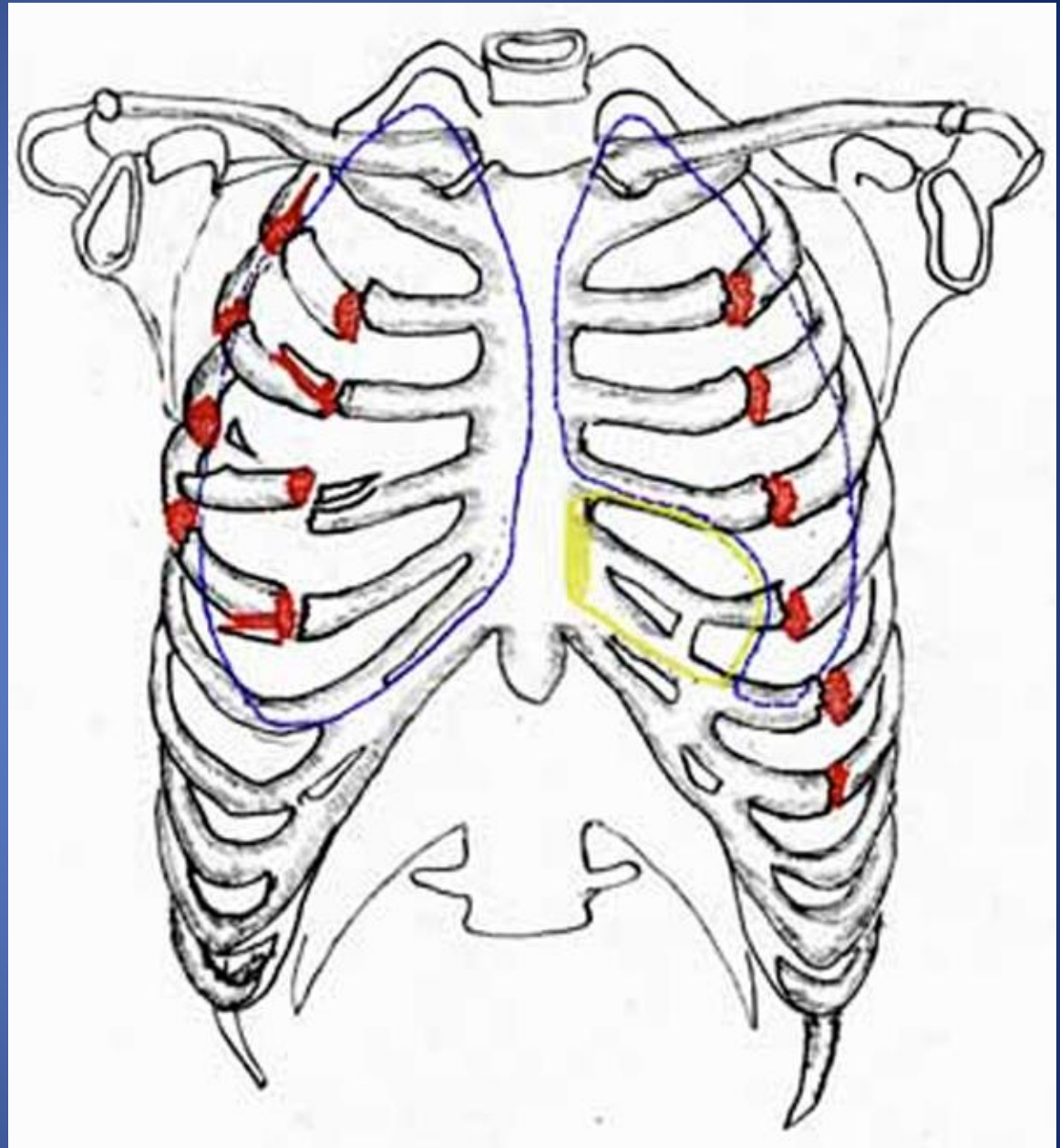
- 1) Frontal
- 2) Parietal
- 3) Occipital
- 4) Temporal



Thorax is supported by the spine.

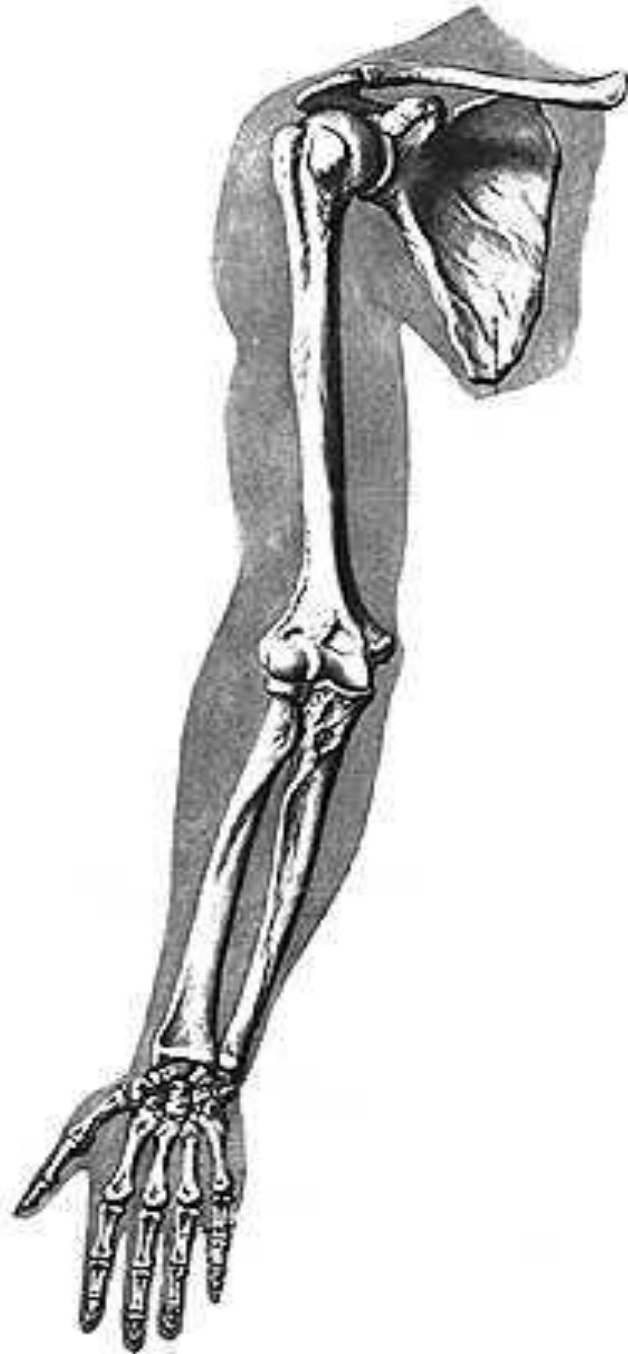
It is composed of 12 thoracic vertebrae, the breastbone, and 12 pairs of ribs.

The breastbone is a long bone in the middle of the chest. Each rib consists of a head, neck and body.



Upper limbs are formed by:

- Clavicle
- Scapula
- Ulna bone
- Radius bone
- Phalanges



Lower limbs are composed of:

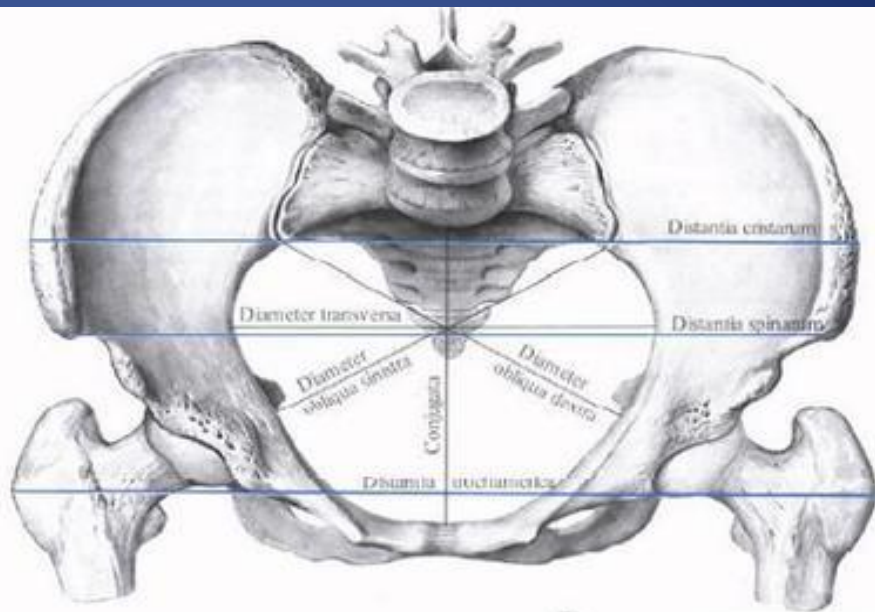
- Femur
- Fibula
- Tibia
- Phalanges



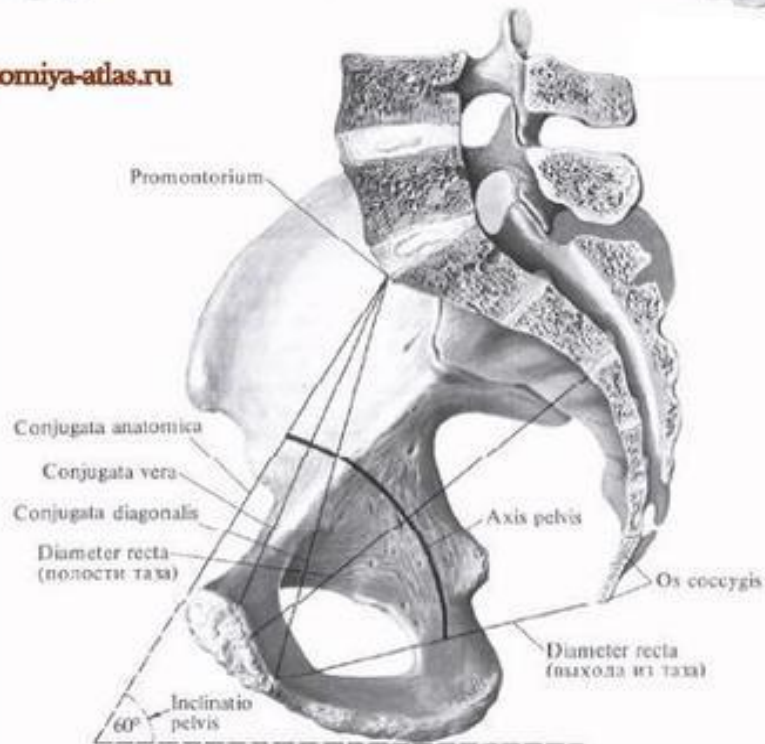
Pelvis connects lower limbs with the trunk.

Bones of the trunk are connected together by joints, cartilages and ligaments.

The bones consist of organic and inorganic substance.



anatomyia-atlas.ru



Latin Terminology versus English Terminology

- sceletum /skeleton
 - thorax
 - cervicalis
 - thoracalis
 - sacralis
 - coccyx
 - frontalis
 - temporalis
 - occipitalis
 - parietalis
- skeleton
thorax
cervical
thoracic
sacral
coccyx
frontal
temporal
occipital
parietal

THANKS FOR ATTENTION.